

# Built On Your Lot



All images are © Alan Mascord Design Associates, Inc. All rights reserved. Any unauthorized use is strictly prohibited.



**Quality and Affordable  
New Custom Homes.**

*2270 Plan*

**\$214,980\***

Spacious 2270 sq ft home with 3 bedrooms, 3 baths, plus a den. Vaulted great room and master with private spa tub. The garage is oversized.

## Exterior Features:

- Craftsman style elevation
- gable shakes (on front)
- metal insulated
- garage door
- fiberglass insulated front door
- energy efficient vinyl windows
- 30 year architectural roof
- insulation ( to code)
- full wrap CertainTeed lap siding
- window wraps (on front / per plan)
- Front exterior porch railings
- 12' X12' concrete back patio
- 2 X 6 construction

## Interior Features:

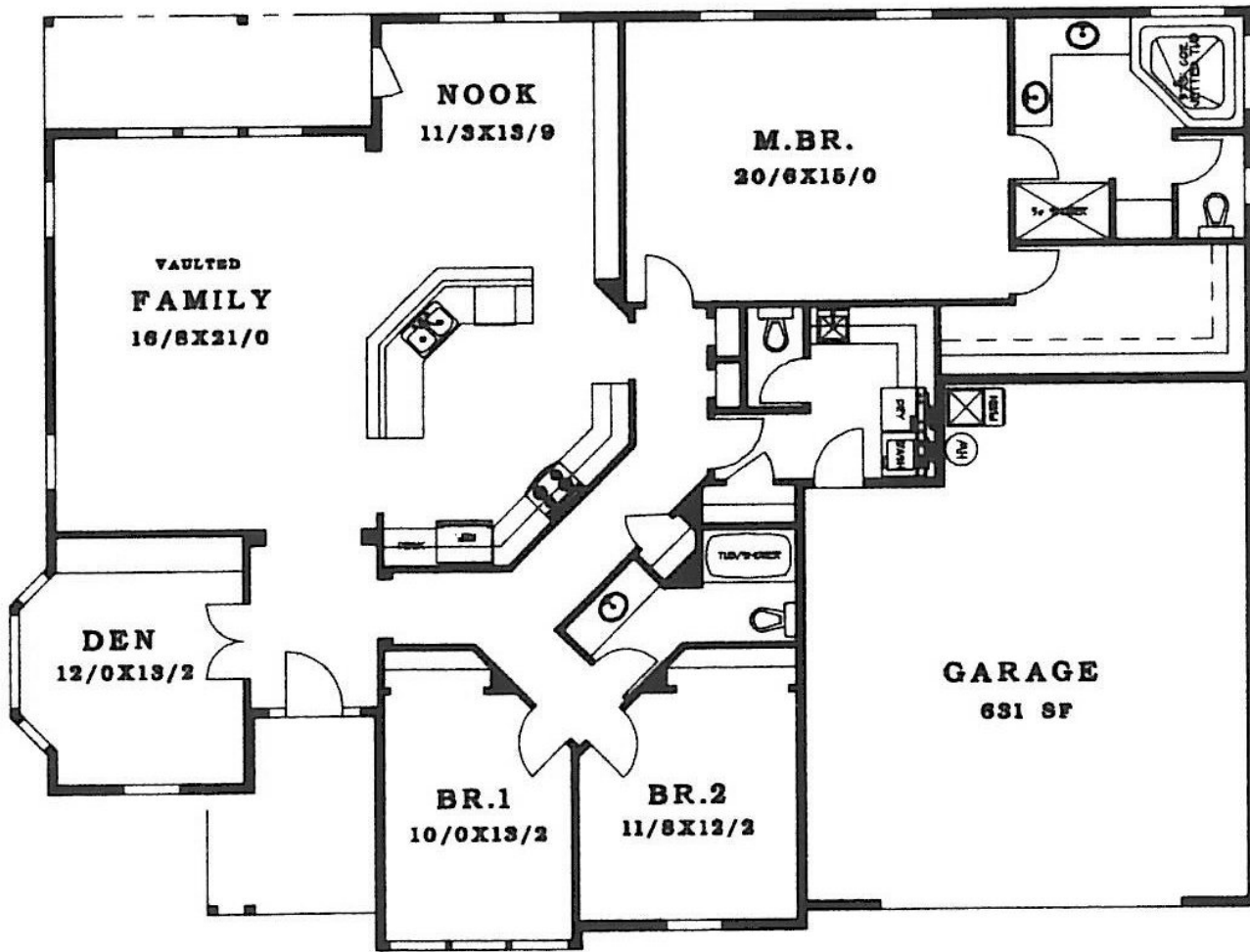
- Forced Air Furnace
- Tile Countertops in kitchen, w/ 6" backsplash
- 80 gallon water heater
- Quality satin finish interior paint
- Rounded sheetrock corners
- Full wood wrapped windows
- Oak cabinets w/ white interiors
- Kitchen can lighting
- White lacquer trim
- Brushed chrome handles & hardware
- Full lighting package
- Maytag appliances w/ micro-hood
- Kohler cast iron sink
- Hardwood entry
- Wire mesh shelving
- 3 telephone jacks
- 3 cable jacks
- 1 ceiling fan (rough in)
- Built in vacuum system w/ vac-pan (rough-in)

**Contact Kale for Info!**

**(360) 607-5971**

**[www.brightwoodhomesNW.com](http://www.brightwoodhomesNW.com)**

\* price does not include utilities and impact fees



50'

67'